

2025 annual report to the Community

Darlington Primary School

Darlington Primary School number: 666

Partnership: Marion Coast



School principal:

Nadia Tropinao

A handwritten signature in cursive script that reads "Nadia Tropinao".

Date of endorsement:

13/03/2026



Government
of South Australia
Department for Education

Context Statement

Darlington Primary School caters for students from R-6. At the time of this report, the enrolment in 2025 is 184. Darlington Primary School is classified as Category 2 on the Department for Education Index of Educational Disadvantage. At the time of this report, the school population includes 15% Aboriginal students, 8% students with disabilities, 19% students with English as an additional language or dialect (EALD) funded background, 2% children/young people in care. Further information about the school is available on the school's website (including its context statement), as well as the My School website.

Data Source: Department for Education data holdings from Mid census captured in AUGUST 2025.

Governing Council Report

The Governing Council has played a key role in supporting school events and initiatives throughout the year.

This term, the organisation and facilitation of the Mother's Day Stall was successfully coordinated, ensuring all students had the opportunity to participate. The Father's Day Stall was also a highlight, with the council managing pricing, set-up, and purchase of items to ensure a positive experience for our school community.

The introduction of pre-loved/used uniform sales was discussed at length and will provide an accessible option for families, particularly those new to Darlington. Following extensive consultation, the Governing Council approved an updated uniform policy to make our school more inclusive—this is now being promoted within the community.

The Chairperson undertook Merit Selection Panel training for the permanent position advertised earlier this year, strengthening our recruitment discipline. Another memorable moment was the Year 6 Graduation, where the Chairperson delivered a speech to the graduating class of 2025.

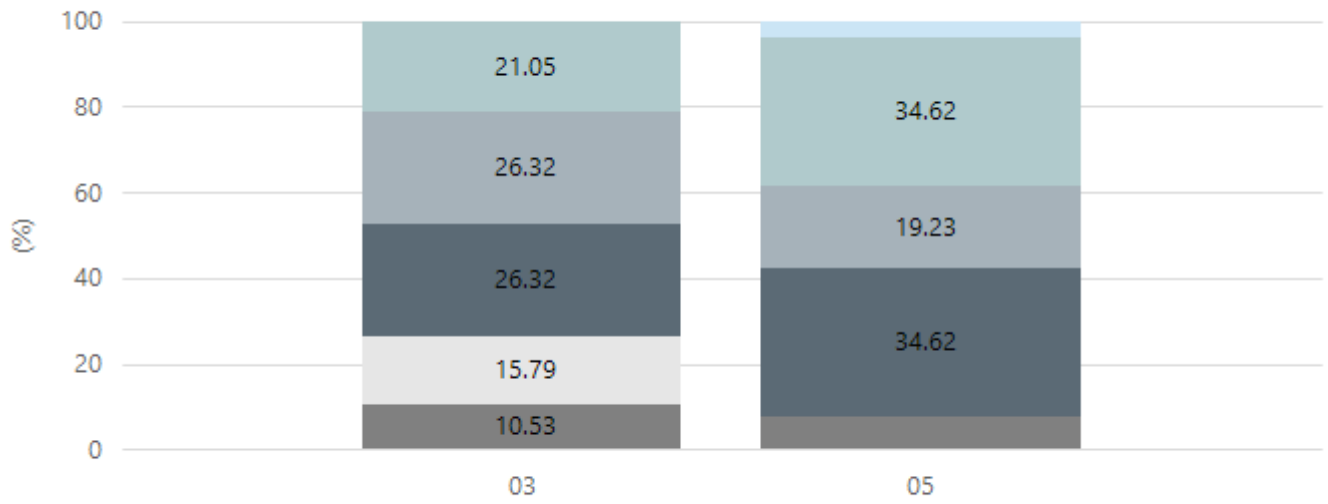
The Governing Council sincerely thanks the staff, community, and students for their continued support and involvement. It is this collaborative community spirit that underpins our school's success.

Performance Summary

NAPLAN Proficiency

In 2023 the Australian Curriculum, Assessment and Reporting Authority (ACARA) - a Commonwealth Independent statutory authority - announced changes to NAPLAN performance reporting. The new approach replaces the previous numerical NAPLAN bands and the national minimum standard.

Numeracy

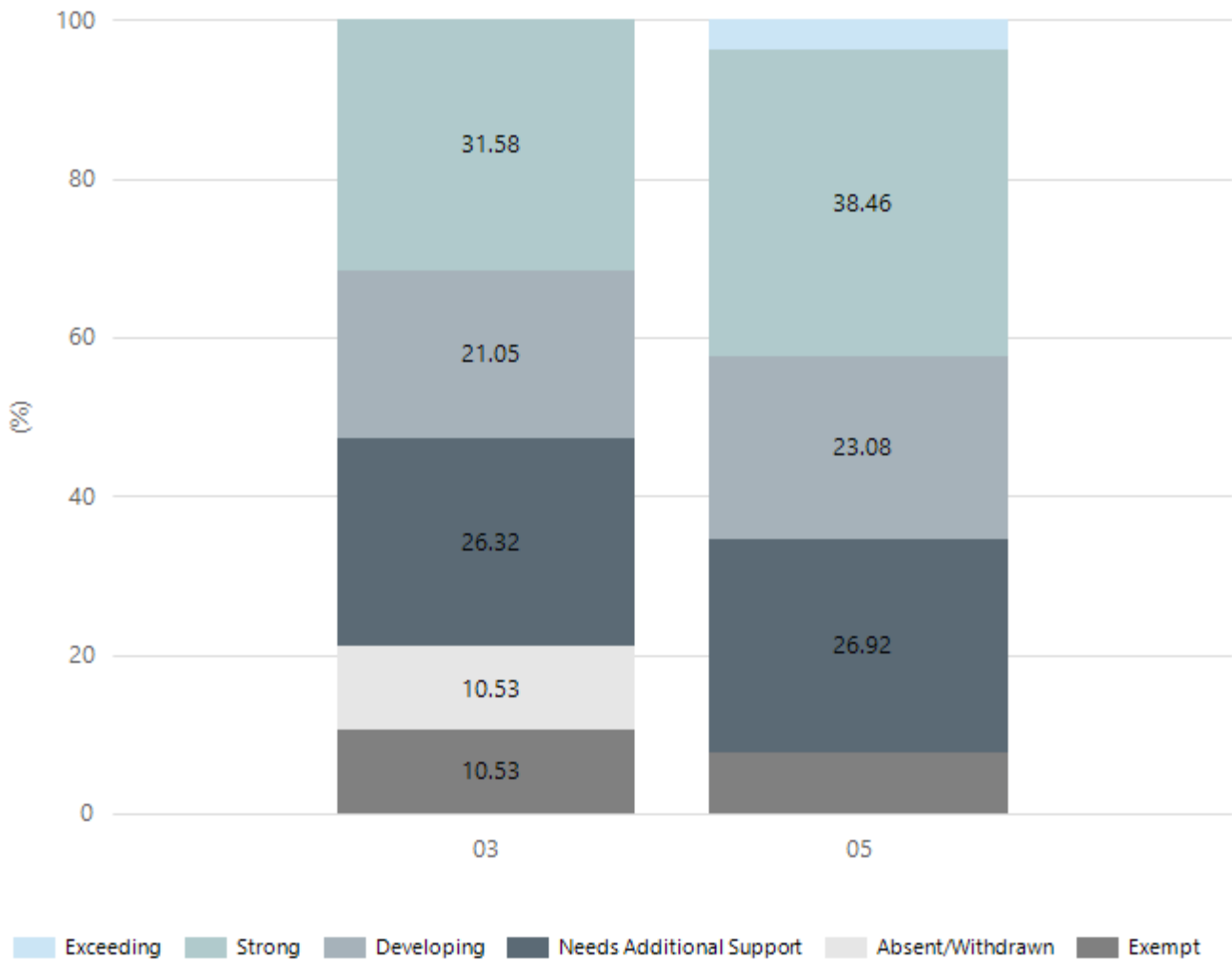


Exceeding Strong Developing Needs Additional Support Absent/Withdrawn Exempt

Year Level	03	05
Exceeding		1
Strong	4	9
Developing	5	5
Needs Additional Support	5	9
Absent/Withdrawn	3	
Exempt	2	2
Total	19	26

Data Source: Department for Education Assessment Data Holdings, 2025. If there are less than 6 students who sat NAPLAN in a school, no information will be shown. If a year level has less than 6 students, that year level will not be shown in NAPLAN results.

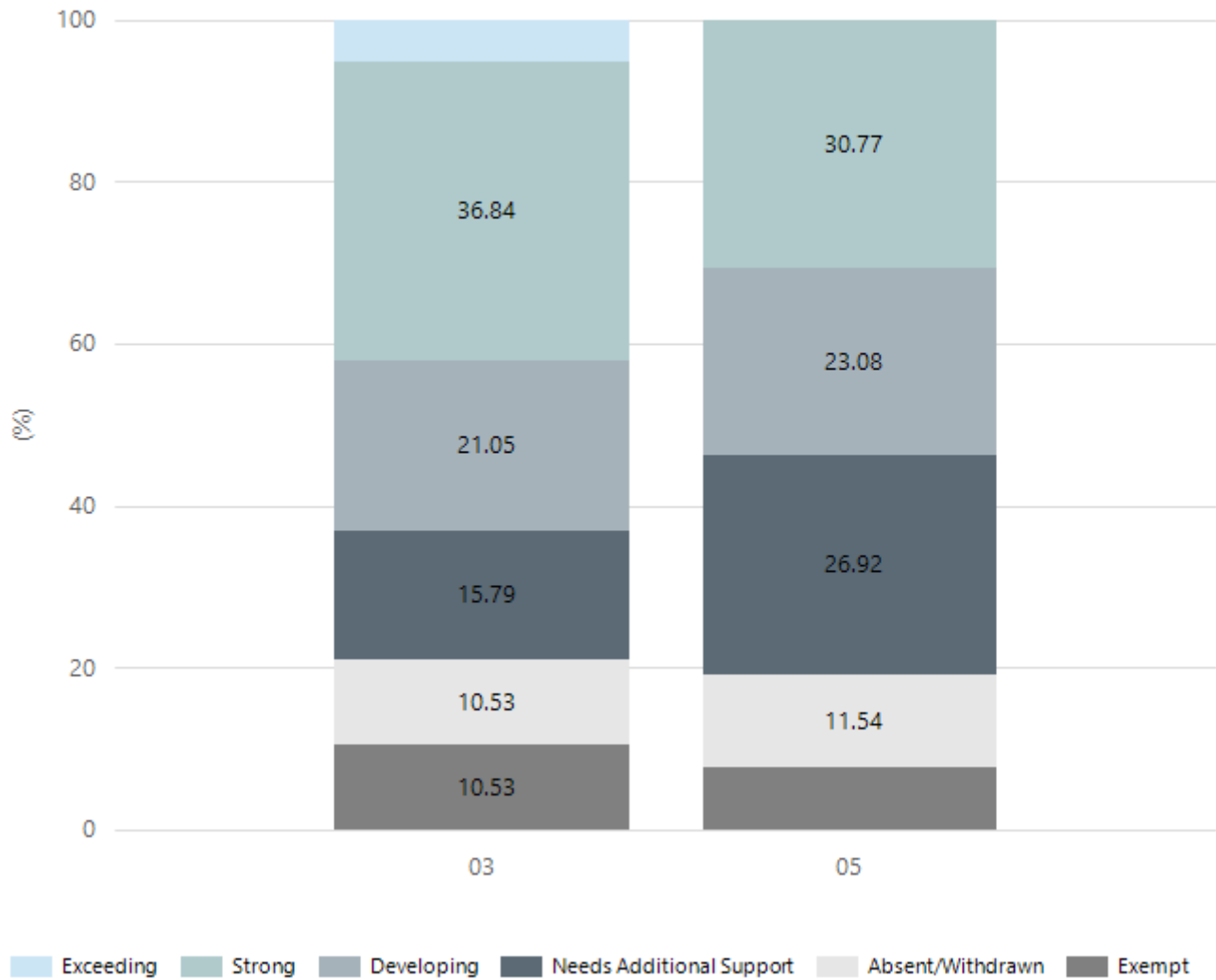
Reading



Year Level	03	05
Exceeding		1
Strong	6	10
Developing	4	6
Needs Additional Support	5	7
Absent/Withdrawn	2	
Exempt	2	2
Total	19	26

Data Source: Department for Education Assessment Data Holdings, 2025. If there are less than 6 students who sat NAPLAN in a school, no information will be shown. If a year level has less than 6 students, that year level will not be shown in NAPLAN results.

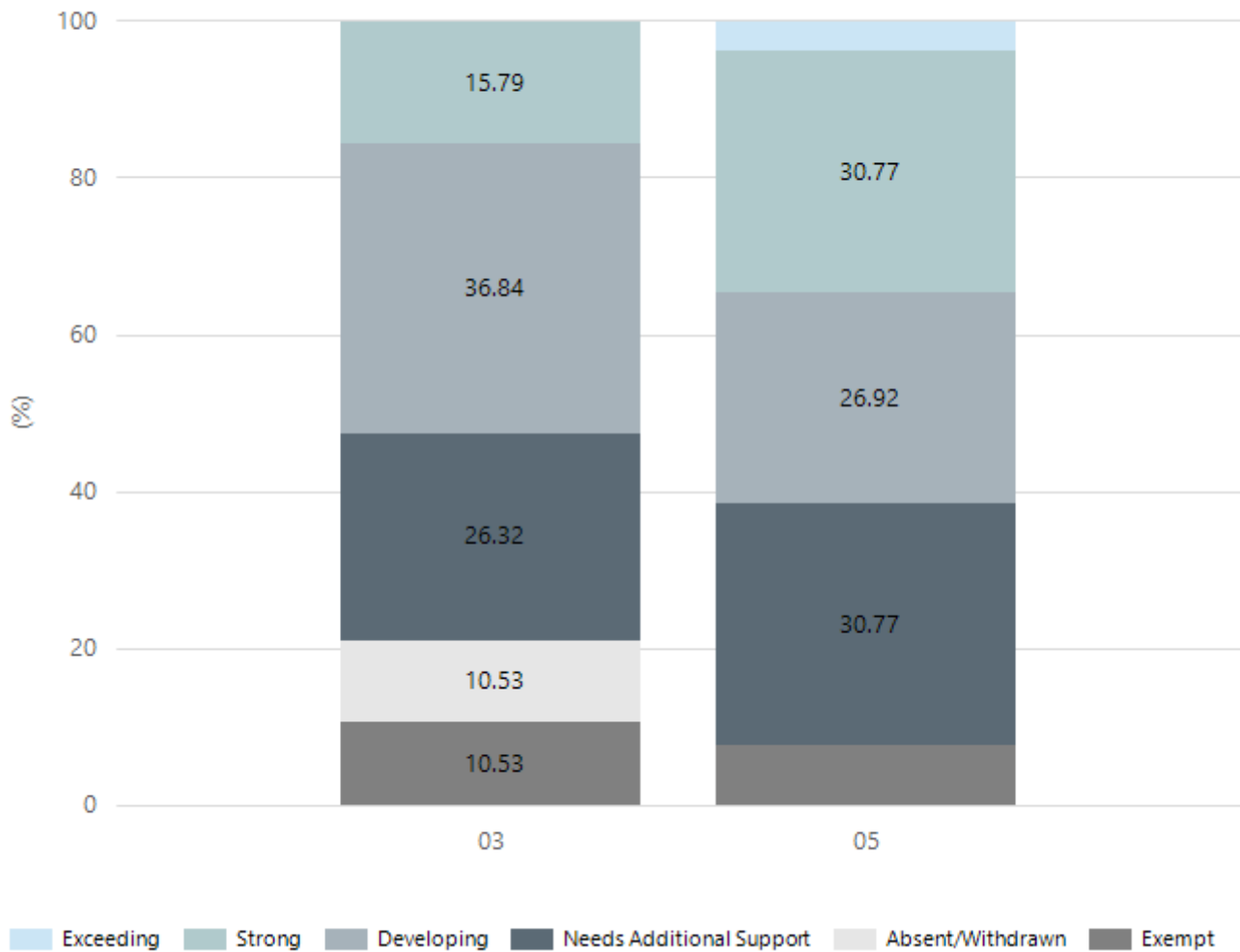
Writing



Year Level	03	05
Exceeding	1	
Strong	7	8
Developing	4	6
Needs Additional Support	3	7
Absent/Withdrawn	2	3
Exempt	2	2
Total	19	26

Data Source: Department for Education Assessment Data Holdings, 2025. If there are less than 6 students who sat NAPLAN in a school, no information will be shown. If a year level has less than 6 students, that year level will not be shown in NAPLAN results.

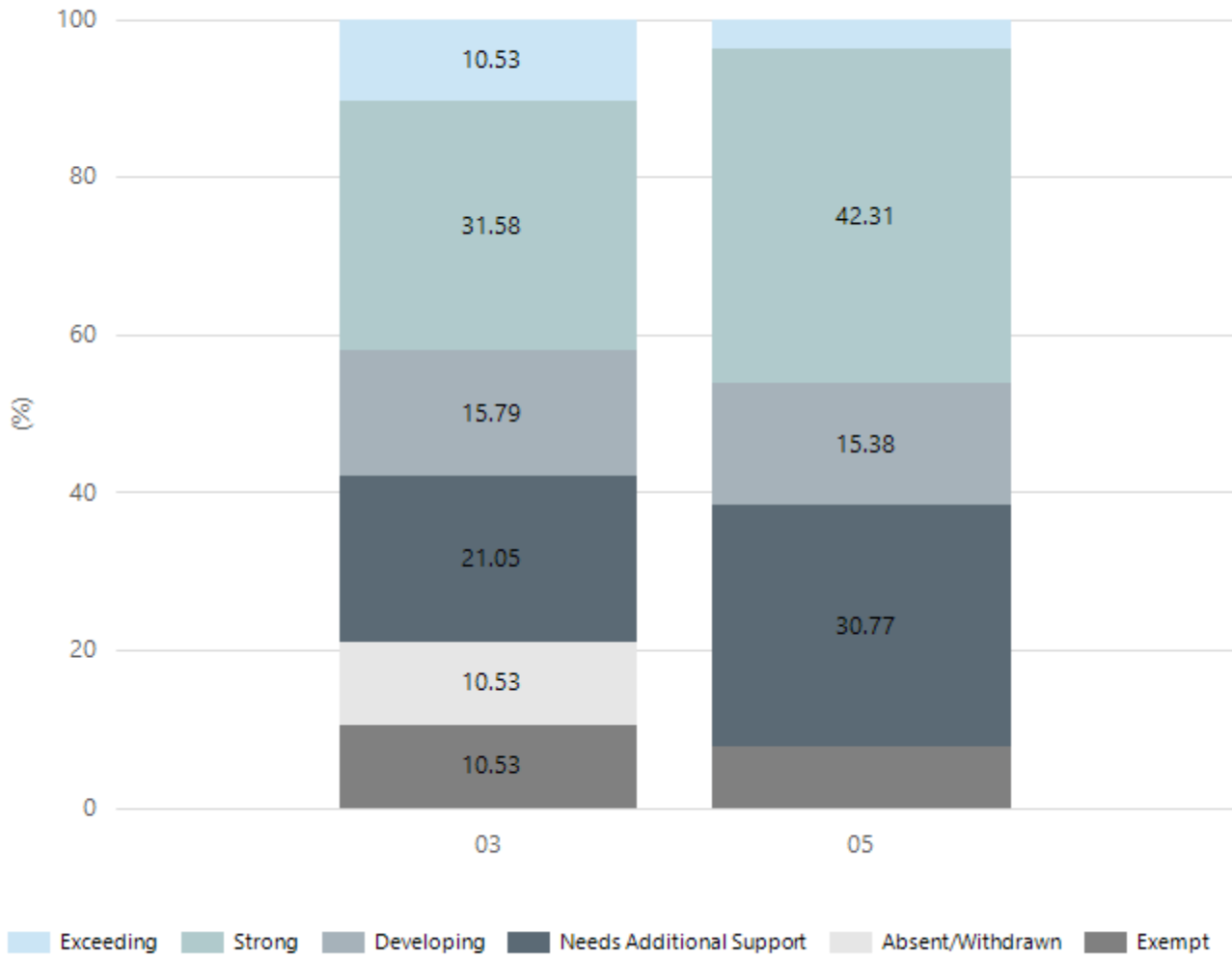
Grammar



Year Level	03	05
Exceeding		1
Strong	3	8
Developing	7	7
Needs Additional Support	5	8
Absent/Withdrawn	2	
Exempt	2	2
Total	19	26

Data Source: Department for Education Assessment Data Holdings, 2025. If there are less than 6 students who sat NAPLAN in a school, no information will be shown. If a year level has less than 6 students, that year level will not be shown in NAPLAN results.

Spelling



Year Level	03	05
Exceeding	2	1
Strong	6	11
Developing	3	4
Needs Additional Support	4	8
Absent/Withdrawn	2	
Exempt	2	2
Total	19	26

Data Source: Department for Education Assessment Data Holdings, 2025. If there are less than 6 students who sat NAPLAN in a school, no information will be shown. If a year level has less than 6 students, that year level will not be shown in NAPLAN results.

School Attendance

Year Level	2023	2024	2025
Reception	87.5%	84.9%	89.3%
Year 01	83.0%	84.0%	76.1%
Year 02	87.6%	87.9%	77.3%
Year 03	81.5%	86.8%	77.6%
Year 04	72.6%	85.2%	88.1%
Year 05	77.9%	83.7%	82.8%
Year 06	82.4%	82.6%	83.5%
Primary Other	89.0%	85.9%	89.2%
Total	84.4%	85.4%	83.9%

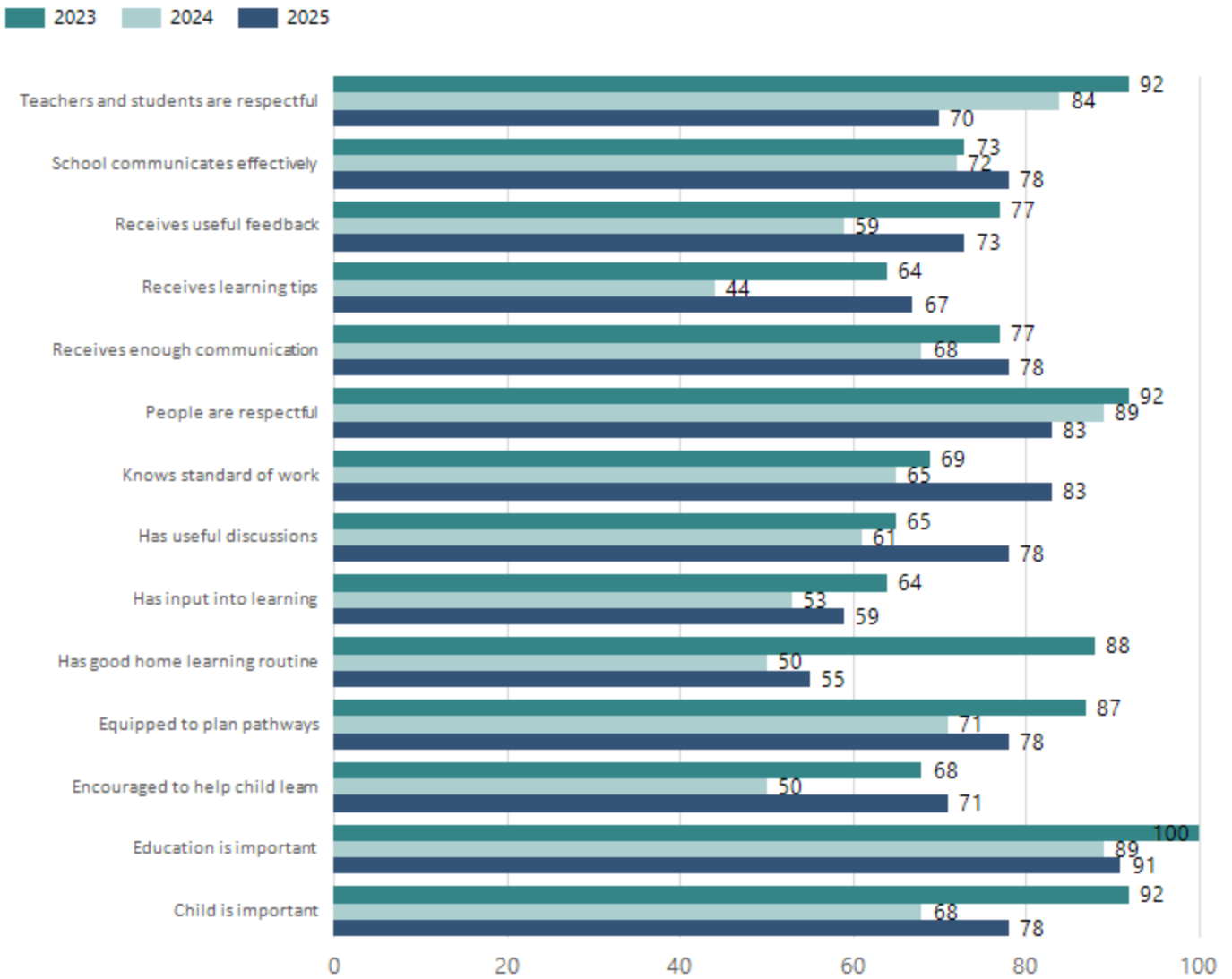
Data Source: Department for Education Attendance Data, Semester 1 Report 2025. A blank cell indicates there we no students enrolled. 'Primary Other' includes students enrolled in specialised education options. 'Secondary Other' includes students who have already spent a year at Year 12 and elected to undertake further study at Year 12.

Attendance Comment

In South Australia, all children and young people must be in school from 6 years to 16 years old. They must attend a government or non-government school full time. From age 16 to 17 however, young people must attend school or an approved learning program (such as an apprenticeship, traineeship, accredited course or university). Schools and parents must encourage and support students to come to school every day. Parents and caregivers must make sure their child is enrolled in a school, and attends school all day and everyday it is open, unless a child is sick or has an approved exemption. Teachers and leaders actively follow up when a student misses school, including recording all absences and non-attendance. All schools in South Australia have local attendance procedures governed under the Education and Children's Services Regulations 2020.

School Parent Opinion Survey Results

Proportion of agree/strongly agree response(%)



Data Source: 2025 Department for Education Parent Opinions Survey, Term 3 2025.

Intended Destination

Leave Reason	Number	%
IS - INTERSTATE	5	11.0%
NG - ATTENDING NON-GOV SCHOOL IN SA	18	39.0%
OV - LEFT SA FOR OVERSEAS	3	7.0%
TG - TRANSFERRED TO SA GOVERNMENT SCHOOL	18	39.0%
U - UNKNOWN	2	4.0%

Data Source: Department for Education Destination Data Report, 2025. Data extract term 3 2025. Data shows recorded destinations for students that left the school in the previous year. Data is uploaded by schools in term 3 and may not reflect final or total figures at time of report creation.

Highest Qualifications held by the teaching workforce and workforce composition

All teachers at this school are qualified and registered with the SA Teachers Registration Board.

Qualification Level	Number of Qualifications
Bachelor's degrees or Diplomas	15
Postgraduate Qualifications	5

Data Source: Data extracted from Mandatory Workforce Information Collections as on the last pay date of June 2025. As self-reported by staff in the system.

Please note: Data includes staff who are Actively employed and on extended paid leave. Please note only the highest qualification of the Teaching staff is reported. Excludes any number of other certifications earned.

Workforce composition including indigenous staff

	Teaching Staff		Non-Teaching Staff	
	Indigenous	Non-Indigenous	Indigenous	Non-Indigenous
Full-Time Equivalents	0.0	18.4	0.7	8.6
Persons	0.0	21.0	1.0	13.0

Data Source: Data extracted from Mandatory Workforce Information Collection as on the last pay date of June 2025.

Please note: Data includes staff who are actively employed and on extended paid leave. "Indigenous category" is self-reported by staff in the system.

Financial Statement

Funding Source	Amount
Grants: State	\$3,981,844.76
Grants: Commonwealth	\$29,782.00
Parent Contributions	\$32,960.00
Fund Raising	\$2,332.00
Other	\$37,690.77

Data Source: School supplied data.